



UNIVERSITY OF  
**MESSINA**  
| founded in **1548**

Single Cycle Degree  
Programme in

# MEDICINE AND SURGERY



→  **Scientific coordinator**  
*Prof. Giuseppe Santoro*  
[master.medicinesurgery@unime.it](mailto:master.medicinesurgery@unime.it)

 **Department**  
Biomedical and Dental Sciences  
and Morphological and Functional  
Imaging

 **Duration**  
6 years



Single Cycle Degree  
Programme in  
**MEDICINE AND  
SURGERY**

## → Programme overview

*The principal objective of the programme (combined bachelor's and master's) is to train medical doctors who will have theoretical and practical multidisciplinary knowledge as well as methodological expertise. They will demonstrate professional abilities in decision-making and operational autonomy for health promotion, prevention and the treatment of diseases in Italy and internationally. The course trains students in the methodological foundations of scientific research and forms the basis for lifelong learning.*

*The degree programme consists of 360 European Credits Transfer System credits (ECTS), in accordance with current European legislation. At least 60 ECTS are to be acquired through training activities aimed at the maturation of specific professional skills. The professional activities are essentially carried out in the Operative Units of the University Hospital in Messina, where care and assistance to the patient are combined with teaching and scientific research, and in General Practitioner offices.*

## → Minimal entry requirements

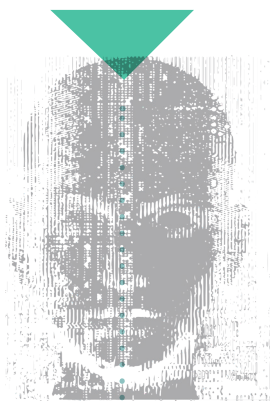
*An Italian secondary school diploma or a certified foreign equivalent demonstrating 12 years of study is required. It is mandatory to pass the Medical Admission Test) exam.*

*Scan the QR Code for further admission requirements criteria.*



## → Language requirements

*English B2 level based on the CEFR is required. The language level of the Medical Admission test is considered above the B2 level of knowledge.*



## → Study programme

**YEAR  
1**

Medical Physics, Statistics and Bioinformatics, Living Matter, Molecular and Cellular Biology, Genetics, Histology and Embryology, Living Matter, Body Architecture, Early Clinical Contact and Communication Skills I.

**YEAR  
2**

Human Anatomy, Physiology, Microbiology, Early Clinical Contact and Communication Skills II, Neuroanatomy, Neurophysiology, Mechanisms of Disease.

**YEAR  
3**

Clinical Semeiotics, Head and Neck, Infectious Diseases, Cardiovascular and Respiratory Diseases, Clinical Laboratory Medicine, Skin and Sexually Transmitted Diseases & Plastic Surgery

**YEAR  
4**

Endocrine, Metabolic and Rheumatological Diseases, Nephro-Urological Diseases, Pathology, Hematology and Oncology, Imaging and Radiotherapy, Gastroenterological Diseases, Hygiene and Global Public Health

**YEAR  
5**

Neuroscience, Obstetrics and Gynecology & Fetal Development Abnormalities, Pharmacology, Pediatric Science, Psychiatry and Clinical Psychology, Orthopedics and Traumatology & Physical and Rehabilitation Medicine, Legal Medicine

**YEAR  
6**

Internal Medicine, General Surgery, Emergency and Intensive Care, Thesis.



Single Cycle Degree  
Programme in  
**MEDICINE AND  
SURGERY**

## → International opportunities

*UniME students have the opportunity to participate in the Erasmus+ Mobility programme both for study and training. Calls are published on the site twice per year.*

*Another opportunity for students is the UniME Funded programme "Students Around the World" (SAW) call for scholarships for study at the extra-European universities in the context of international cooperation agreements. For further information please visit our site.*

## → Tuition fees

*A fixed fee (€ 156.00) and a remaining amount of tuition calculated on the basis of a sliding scale. For further information:*



//



*This department offers state of the art machines that provide valuable training experience.*

**Diana Issa**

*Messina is a city whose streets are full of colours, nature and kind people. It fills your heart with happiness, joy and peace.*

**Ghidaa Bayatra**



UNIVERSITY OF  
**MESSINA**  
| founded in 1548

